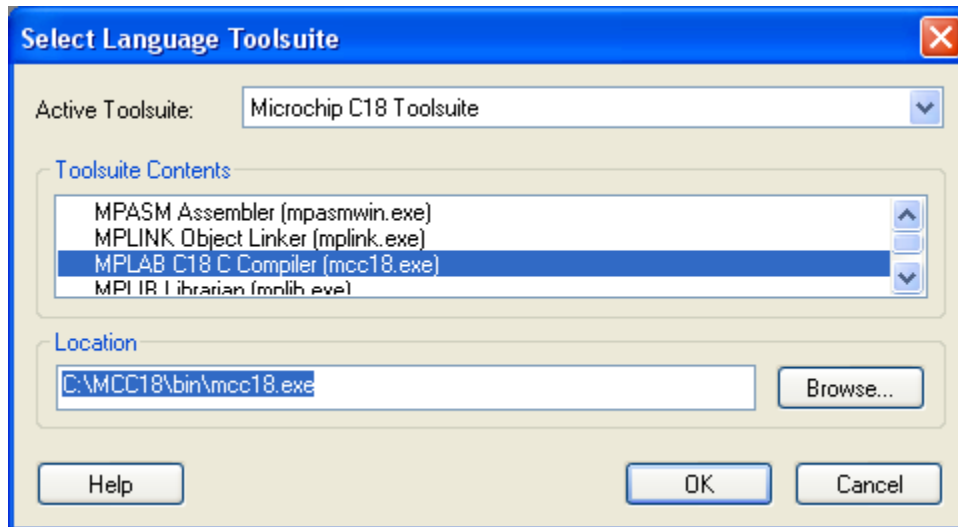
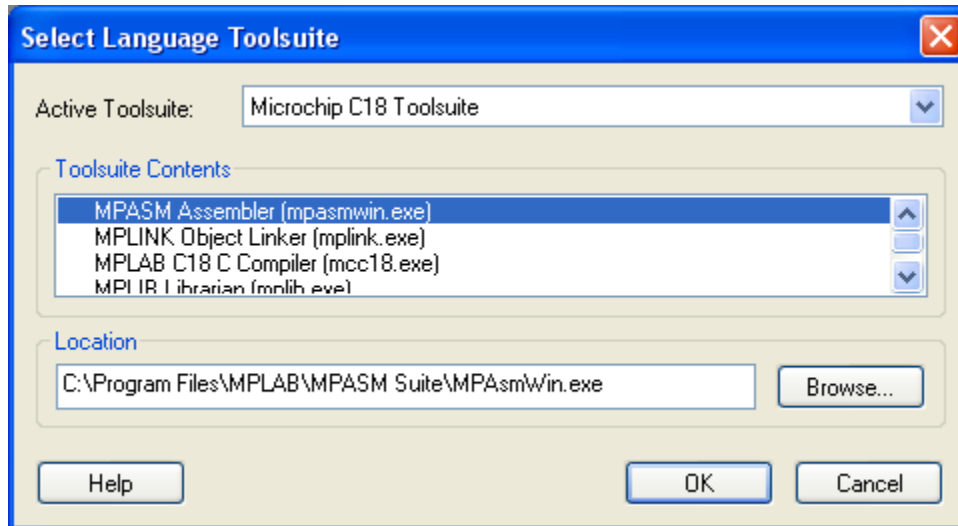
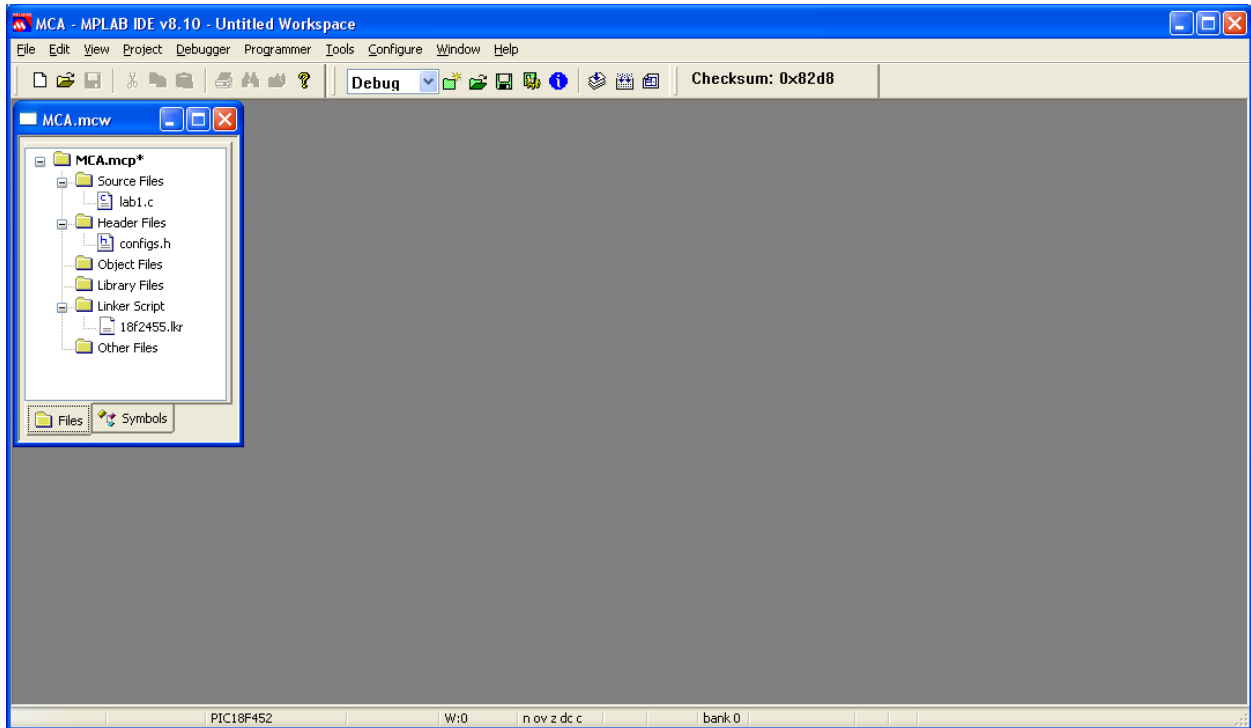


Launch MPLAB and create a new project (Project > New. . . ) and select the Microchip C18 Toolsuite (Project > Select Language Toolsuite. . . ). For each of the components (i.e., mpasmwin.exe, mplink.exe, mplib.exe, and mcc18) in the toolsuite, you should make sure that MPLAB is using the executables that came with the C18 compiler.

Basically, makes sure there aren't any "X"s near your contents...

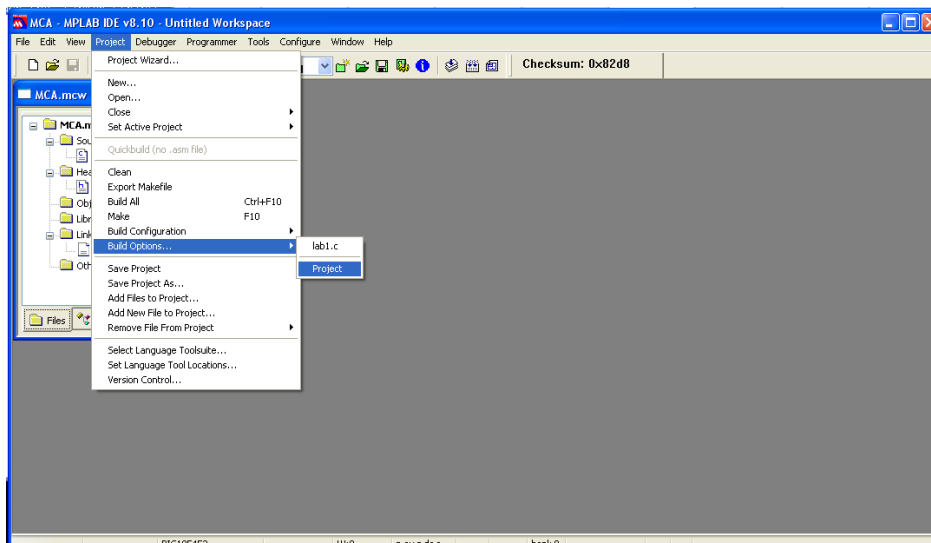


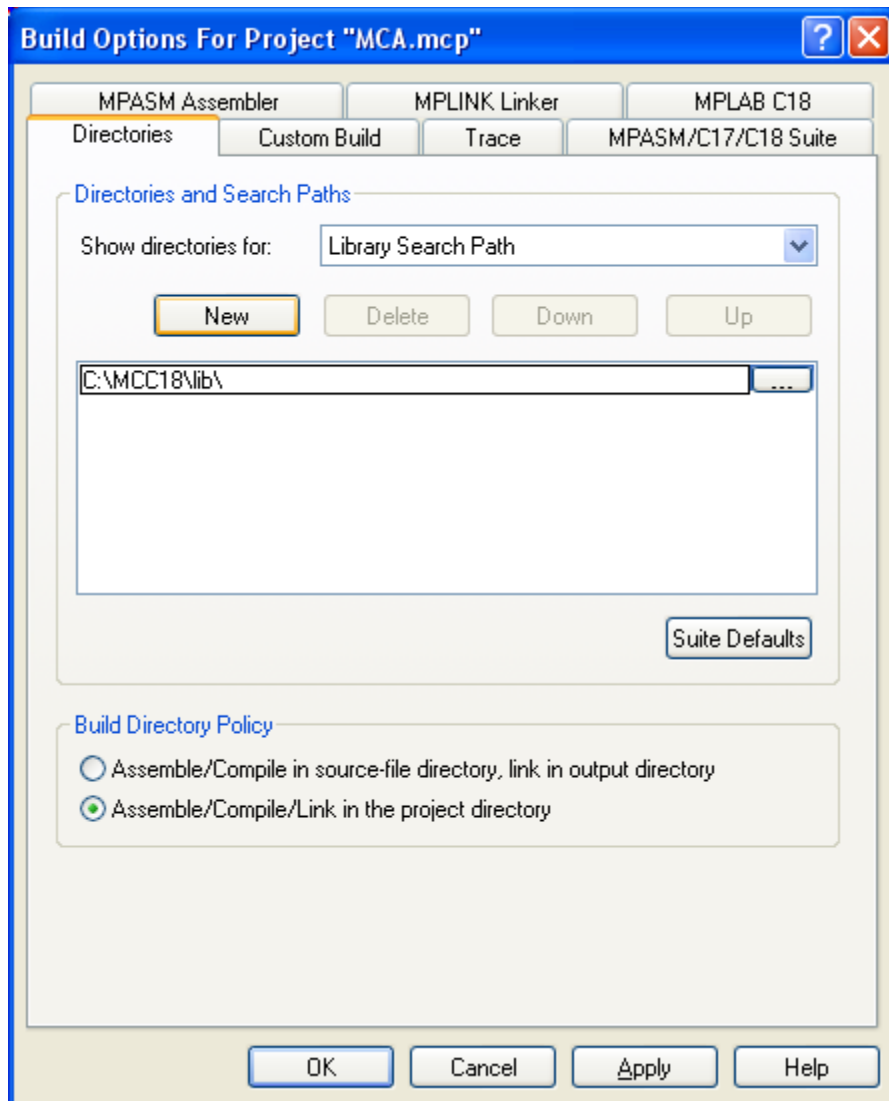
Add lab1.c under the "Source Files" heading, configs.h under the "Header Files" heading, and 18f2455.lkr under the "Linker Scripts" heading in the project window.



You may have to View>Project to get here.

Next, under the "Directories" tab of the "Build Options" dialog (Project > Build Options. . . > Project) for your project, add to the Include Path C:\MCC18\h\ and add to the Library Path C:\MCC18\lib\. Next select PIC18F2455 (Configure > Select Device . . .) as the device that you will be using.





Next select PIC18F2455 (Configure > Select Device . . . ) as the device that you will be using. Build the project (Project > Build All or **Cntrl+F10**),

